



Dual Head Pocket Ultrasound USB&WiFi



Built-in 2 batteries

- Wireless charging
- Support working while charging by cable



Anti-skid design

- Safer and more reassuring operation

4 colores para usted

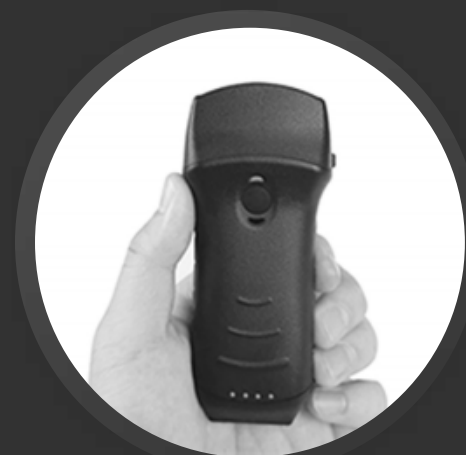


C10TX:
convex+linear+cardiac 3 in 1 probe



Full Waterproof

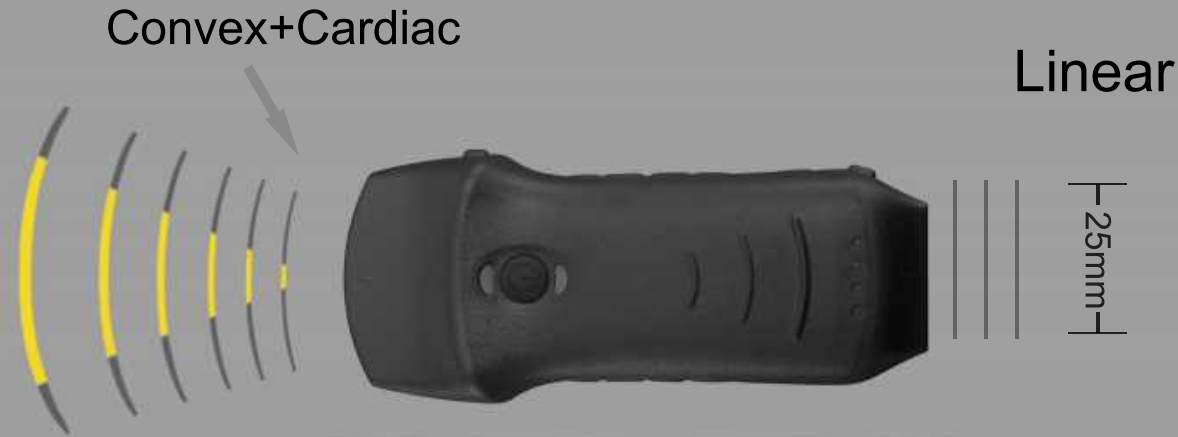
- IP68 level
- Built-in cooling coating



Only 182g

- Smaller than iphone
- USB&WiFi 2 connections

Probe Spece



121mm

N.W:182g

Convex array probe

Freq: 3.2/5.0 MHz

Depth: 90-160-220-305mm

Radius:R45

Scan angle:48

Presets:

Abdomen, GYN, OB, Cardiac

Urology, Kidney, Lung,

User1, User2;

Linear array probe

Freq:7.5/10MHz

Depth: 20-40-60-100mm

Footprint: L25mm

Presets:

Thyroid, Smallparts, Pediatrics,

Vascular, Carotid, Breast ,Msk,

Nerve, Aesthetics ,VesselFlow ,

User1, User2

Phased array probe

Freq:2.5/5MHz

Depth: 90-120-140-160mm

Scan angle:48

Presets:

Cardiac Abdomen

Download “MY USG” from App Store / Google Play



Compatibility

- √ IOS 11.0 or later:
iphone7(plus) ~ iphone13 series or later
ipad Air2 ~ipad mini 5~ipad Pro series
or later
- √ Android 14 or later
- √ Windows 10 version PC

Common Specs



Element: Dual 128

Connection: USB&WiFi

Channel: Dual 64

Display mode: B, B/M, Color, PW,
PDI, B+Color+PW

Presets:

Abdomen, GYN, OB, Cardiac Urology, Kidney, Lung,
User1, User2; Thyroid, Smallparts, Pediatrics, Vascular,
Carotid, Breast ,Msk, Nerve, Aesthetics ,VesselFlow



Image frame rate: 24f/s

Cine play: 100/200/500/1000

Auto play, Manual play

Image save: jpg, avi, Mp4 and DICOM

WiFi type: Built-in WiFi

802.11g/20MHz/5G/450Mbps

USB type: Dual USB-C

Host: Android/IOS/Windows Tablet
, Smart phone, PC



Measurement:

B: Length, Area/Circumference, Angle, Trace, Distance

GA(CRL,BPD,GS,FL,HC,AC)EFW(BPD,FL)

B+M: Heart rate, Time, Distance, LVID(LVIDd, LVIDs, EF, SV)

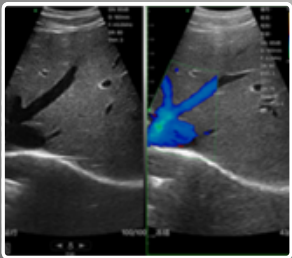
B+PW: Velocity, Heart rate(2), S/D, Depth.

Automatic Vessel Flow Measure: PS, ED, TAMAX, TAMEAN, PI, RI, S/D, DIAM, FL

Clinical Image



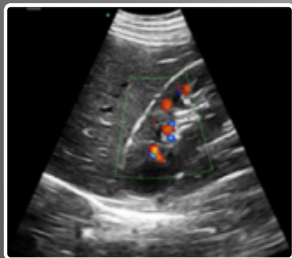
Convex probe



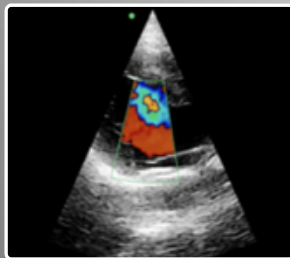
B+Color Liver



B Fetus



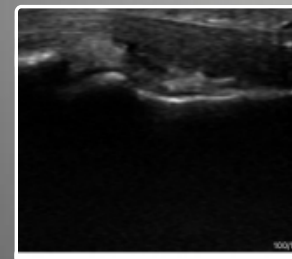
B+Color Kidney



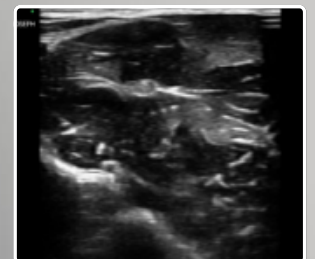
B+Color



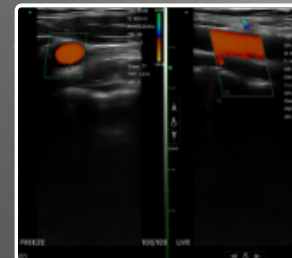
Linear probe



B MSK



B Nerve



B+Color Artery



B+Color Thyroid

Friendly Operating Interface

Datasheet

·You can save the scanned picture,video, report



Dual screen

·Analyze and compare imaging in any 2 modes



Multiple modes

·Switch between B, B+B, B/M, Color, PW, PDI, B+Color+PW.



Annote

·Doctors can add markers or notes on the imaging.



Print

·The imaging or report of patient can be printed by printer.



Measure Magnify

·Measure the boundary of smaller target more accurately.



Better ultrasound Better Life



KTD KONTED

www.kontedmed.com